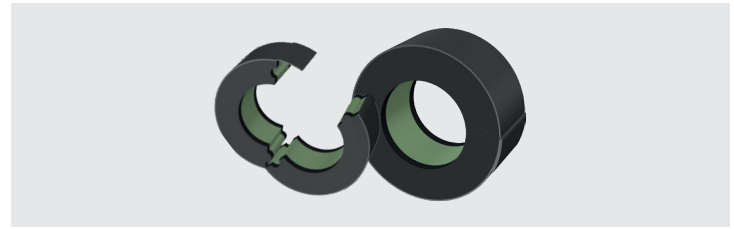


K-FLEX® 360 INSULATED PIPE SUPPORT



DESCRIPTION

K-FLEX® 360 Insulated Pipe Supports are comprised of a hinged, 360° position-free, rigid polyurethane core with a high compressive load that is joined by two NBR/PVC-based elastomeric insulation collars. An outer PVC jacket with overlapping tab system serves as a vapor barrier.

AVAILABILITY

K-FLEX® 360 Insulated Pipe Supports are black in color and are available in 1/2" to 2" wall thickness, in diameter sizes ranging from 3/8" ID to 6" IPS (ID range is subject to variation depending on wall thickness).

Pipe hanger clamps are sold separately and are not available from K-FLEX® USA.

APPLICATIONS

K-FLEX® 360 Insulated Pipe Supports are recommended for applications with service temperatures ranging from -40°F (-40°C) to +175°F (+80°C). The product is used to eliminate insulation gaps and ensure proper insulation thickness at load-bearing hanger points, which helps to maintain total insulation system integrity. Without them, the weight of the pipe being placed in the support can compress the insulation, reducing thickness and creating a thermal short circuit that results in potential condensation formation.

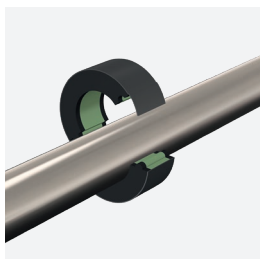
INSTALLATIONS

K-FLEX® 360 Insulated Pipe Supports provide a quick, reliable alternative to traditionally

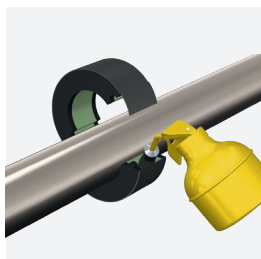
recommended, more time consuming solutions. K-FLEX® recommends that insulation is installed on non-operational systems with clean, dry surfaces in ambient conditions between 40°F and 100°F. A properly sized insulating support should be placed the around the pipe, with an approved contact adhesive applied to the urethane's grooved seams. The overlapping tab's release liner should be pulled and closed to seal the support. Once the metal pipe hanger collar is fixed around the support system, the elastomeric collars should be sealed to the elastomeric insulation tubes with an approved contact adhesive applied to both surfaces.

K-FLEX® 360 PIPE SUPPORT ▶ TECHNICAL DATA

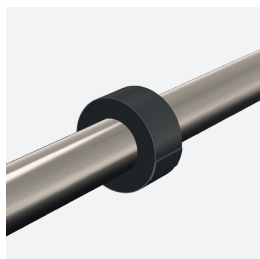
▼ Physical properties ▼		▼ K-FLEX® 360 PIPE SUPPORT ▼		▼ Test methods ▼	
Main Composition		Rigid polyurethane core with NBR/PVC-based elastomeric insulation collars, wrapped by an outer PVC jacket with overlapping tab system			
Compressive Strength (perpendicular)		130 psi		ASTM D1621	
Thermal Conductivity (Btu-in/hr-ft ² -°F)	75°F (24°C) Mean Temp	0.245 (Elastomeric Collar) 0.26 (Polyurethane Core)		ASTM C177 ASTM C518	
Density		6 lb/ft ³ (Polyurethane Core)		ASTM D1622	
Operating Temperature Range		-40°F (-40°C) to +175°F (+80°C)			
Water Vapor Permeability (Dry Cup)		<0.01 perm-in (Elastomeric Collar)		ASTM E96	



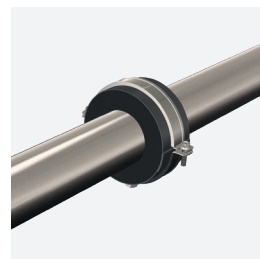
Place the insulating support around the pipe.



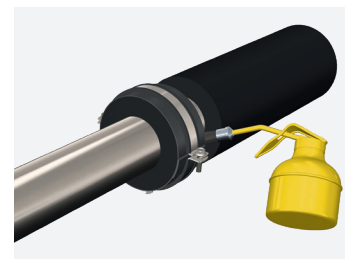
Apply K-FLEX® contact adhesive to the halfcollars.



Seal the support by overlapping the adhesive tabs.



Fix your collar* around the support.



Glue the support to the insulating material.

*Pipe hanger clamps are sold separately and are not available from K-FLEX® USA.

The K-FLEX® USA website contains the most recent version of all K-FLEX® USA literature. Please refer to the website for current versions of K-FLEX® USA literature at www.kflexusa.com